

Example Use Case: New network design and ROI analysis

Client: Resolia, Belgium

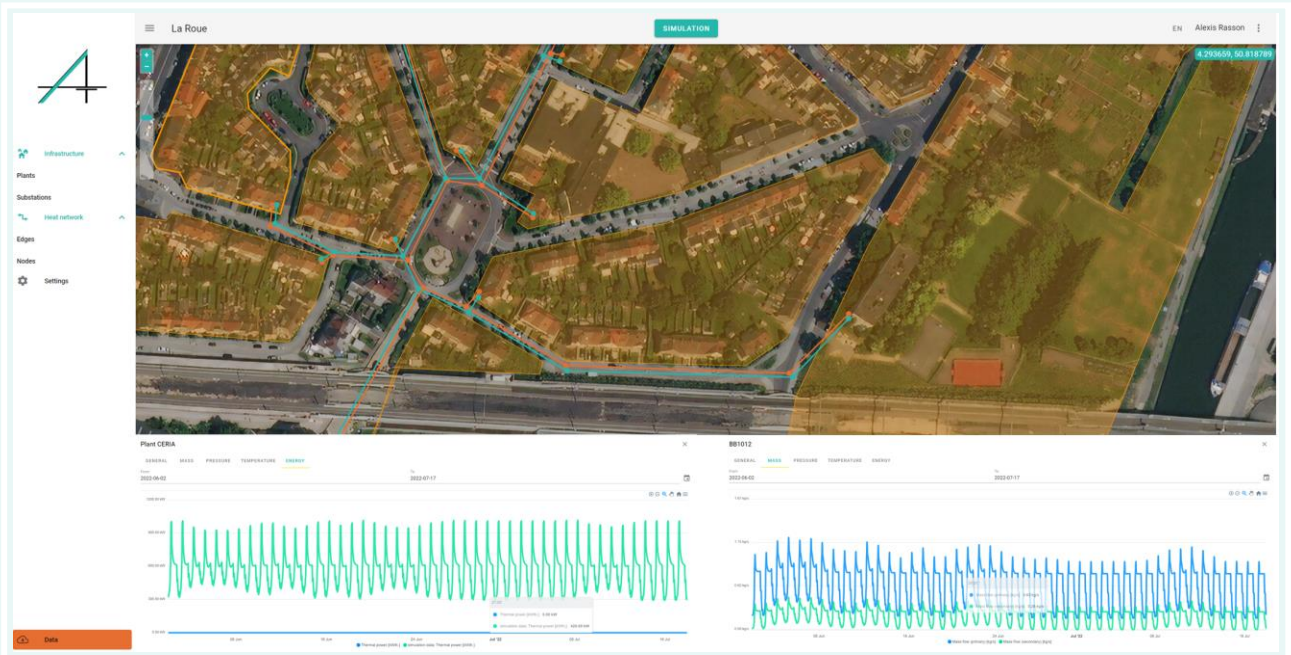
Client information

Pierre Baijot
CEO
pierre@resolia.energy

Background and problem description

Resolia is an engineering company from Belgium and is responsible for suggesting a DH network design in the suburb of Brussels called LaRue. As part of the Brussels master plan for decarbonization of heat supply, the aim is to design a DH network from scratch including pipe sizing, calculation of heat plant thermal capacity and integrated ROI analysis.

Solution: Application of Arteria GridCreator™ & Arteria Planning™



The network was drawn on the map with just a few clicks. Pipe lengths and diameters were computed for fast CAPEX calculation considering the thermal demands of the consumers. Dynamic network simulation allowed to estimate thermal capacity for the heating plant and the performance of the network considering operational losses.

Benefits

1. **Easy and fast** creation of a network model from scratch
2. **Dynamic simulation** of network behavior (summer/winter/peak etc.)
3. **Integrated ROI analysis** for **well-informed decision** making

Contact

Dr. Stefano Coss
CEO
Arteria Technologies GmbH
stefano.coss@arteria.at
+43/69910509386

Free Demo available

